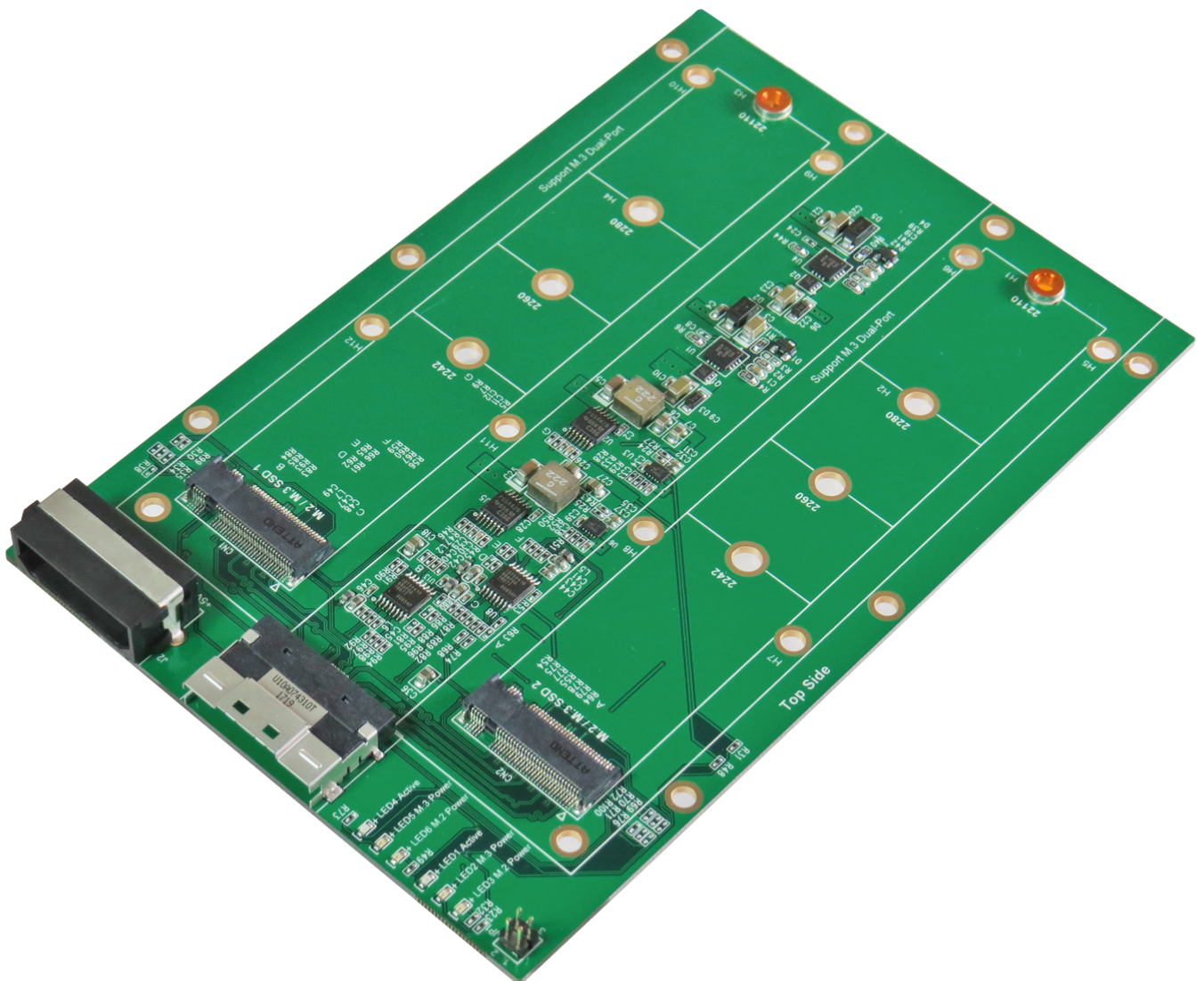


Innocard Minerva

PC892A

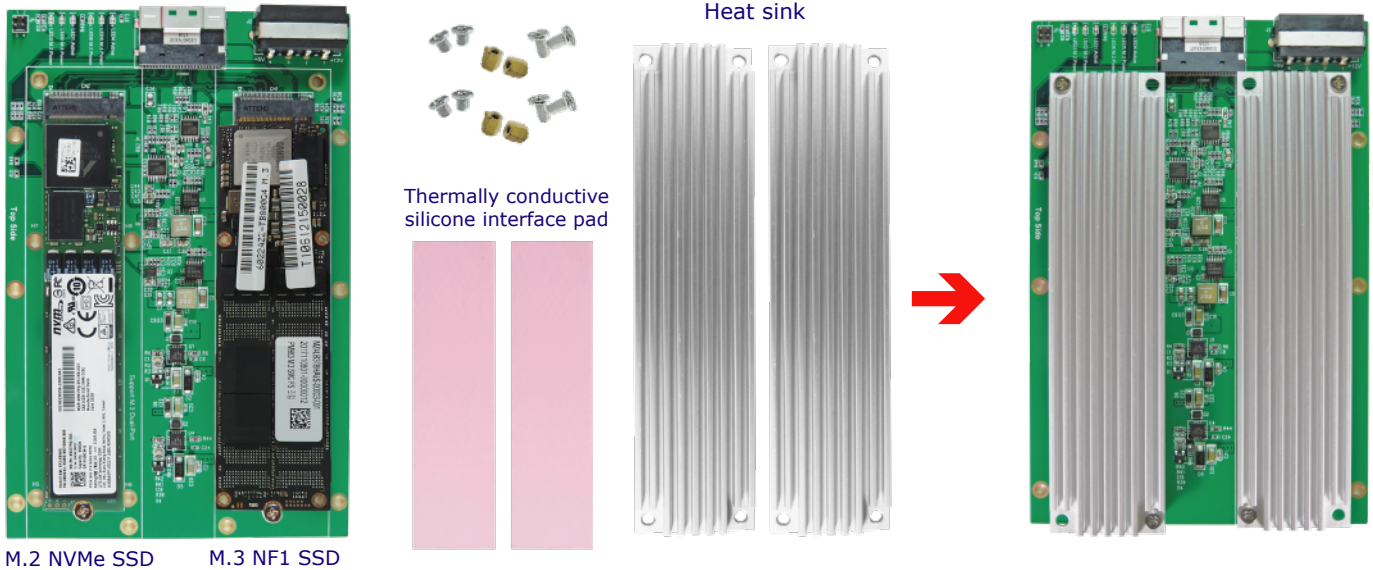
Slimline SAS 8-Lane for dual ports M.2/M.3 NF1 NVMe SSD Adapter

PC892A adapter card is used to support bifurcated x8, x16 PCIe Gen 3 AIC or follows the SFF-9402 pinout specification RAID Card



Slimline SAS 8-Lane for dual ports M.2/M.3 NF1 NVMe SSD Adapter

PC892A



Features

- ※ Built-in +12V Hot Plug protection power module for M.3 NVMe SSD
- ※ Built-in +3.3V Hot Plug protection power module for M.2 NVMe SSD
- ※ SFF-8654 Slimline SAS 8i to M.2, M.3 convert
- ※ Built-in SFF-8654 8i connector, pin-out defined by PCIe
- ※ Built-in M.2 M-key connector, pin-out defined by PCIe
- ※ LED 1, LED4 Red LED Blinking indicates SSD active status
- ※ LED 2, LED 5 Green LED on M.3 SSD power ready
- ※ LED 3, LED 6 Green LED on M.2 SSD power ready

Specifications

- ※ Compliant with NVM Express 1.2a
- ※ Supports PCI Express Base Specification Rev 3.1
- ※ Supports PCI Express M.2 Specification Revision 3.0, Version 1.2_06262019
- ※ Compliant with SFF-8654 Specification Rev 1.2
- ※ Support Samsung M.3 NF1 Datasheet_v0.4
- ※ The adapter SFF-8654 Slimline SAS 8i connector pinout based on SFF-9402 Rev1.1

Supports the following form factor M.2 & M.3 SSD

- ※ Type 2242-D2-B-M: 42mm(L) x 22mm(W)
- ※ Type 2260-D2-B-M: 60mm(L) x 22mm(W)
- ※ Type 2280-D2-B-M: 80mm(L) x 22mm(W)
- ※ Type 22110-D2-B-M: 110mm(L) x 22mm(W)
- ※ Type 305110-D2-B-M: 110mm(L) x 30.5mm(W) for M.3 NF1

Various high speed cable application cases

- ※ SFF-8654 8i to SFF-8654 8i Cable for SFF-8654 Slimline SAS Host by SFF-9402 defined PCIe REFCLKp,n
- ※ SFF-8611 8i to SFF-8654 8i Cable for SFF-8654 Slimline SAS Host by SFF-9402 defined PCIe REFCLKp,n
- ※ SFF-8643 8x to SFF-8654 8i Cable for SFF-8643 mini SAS HD Host by Intel define PCIe REFCLKp,n